

## LOCAL VILLAGE EVENTS

1st April 9.30am Spring Walk from Taddy VH (T)	Page 22
3rd April 8.00pm Annual Taddy Parish Meeting (T)	Page 25
4th April 7.00 pm Fast Broadband for Swalcliffe Meeting (S)	Page 26
7th April 10am Swalcliffe Park School Open Day (S)	Page 24
8th April 2.30pm Horti Society Spring Show (T)	Page 4
9 th April Pony Club Hunter Trials (S)	Page 24
11th April 7.30pm Annual Swalcliffe Parish Meeting (S)	Page 25
13th April 7.00pm Taddy Village Hall AGM, Village Hall (T)	Page 22
14th April 1.00pm Rosie Weston Table-Top Sale (T)	Page 6
29th April 2.30pm Plant Sale Swalcliffe Village Hall (S)	Page 4
29th April 10am Coffee Morning for Taddy Village Hall (T)	Page 22
30th April One Day Horse Event (S)	Page 24
13th May 10:30am Tea and Cakes etc Taddy V.H. (T)	Page 8
10th July Start of Scarecrow Competition (T)	Page 10
22nd July n7.00pm Scarecrow concert at St Nicholas (T)	Page 21
3rd September 1.30 pm Tadmarton Fete (T)	

T= Tadmarton S=Swalcliffe

### PADDOCK & ORCHARD GRASS MAINTENANCE AT REASONABLE PRICES

Types of work undertaken:  
Re-seeding, mowing/topping, harrowing, rolling,  
fertiliser spreading and spraying.

Contact Martin Cherry ,

**PADDOCKWISE**

**Tel: 01608 737415**

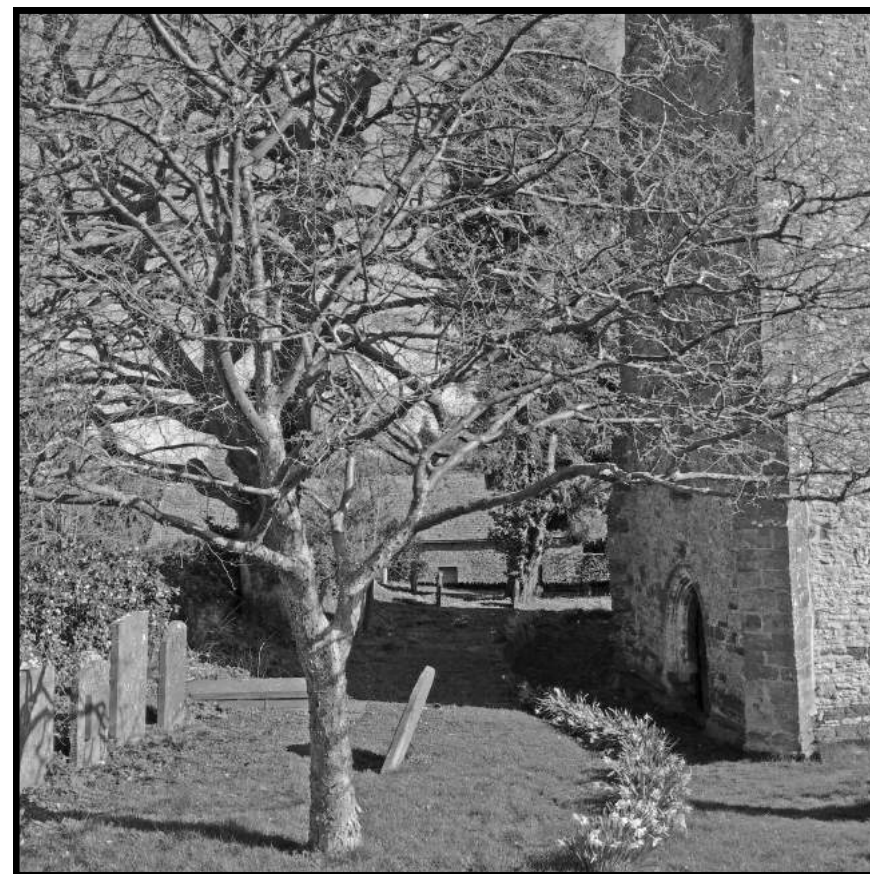
**Mobile: 07785 916252**

**Email: martincherry07@btconnect.com**

## The Link

**News and information covering  
Tadmarton and Swalcliffe**

**April 2017**



**Spring in St Nicholas Churchyard**

**Tadmarton Village Website**  
[www.tadmartonvillage.co.uk](http://www.tadmartonvillage.co.uk)

**Swalcliffe Village Website**  
[www.swalcliffevillage.co.uk](http://www.swalcliffevillage.co.uk)

## EDITORIAL & ADVERTISING

### Editor from May Issue

Mery Wolke  
Honey Stone Cottage  
Hollow Road  
Lower Tadmarton  
OX15 5SS  
Tel: 01295 780451  
Mob: 07794950664  
tadmartonandswalcliffelink@gmail.com

### Swalcliffe contributions

Charlotte Watkins  
Holly Cottage, Bakers Lane,  
Swalcliffe.  
Tel: 01295 788045  
chirpie34@hotmail.com

### New arrivals, births, marriages and deaths send to:

Carole Moir Tel: 01295 788509  
carole.moir123@btinternet.com

### Advertising Manager and Treasurer

Julie Lingwood  
Willows End, Lower Tadmarton,  
Banbury OX15 5SS  
Tel: 01295 788813  
jb@lingwood.eu

### The Link is Sponsored by

Christopher Dean & Co  
Horticultural Society  
Tadmarton Church  
Tadmarton Village Hall  
Swalcliffe Church  
Tadmarton Parish Council  
Swalcliffe Parish Council

## Advertising Rates

The Link is delivered to 350  
homes in Tadmarton, Swalcliffe  
and Highlands  
Price for 1 year (10 issues)  
*price for single issues on application.*

Full page 125mm x 185mm £110  
½ page 125mm x 90mm £66  
¼ page 60mm x 90mm £33  
⅛ page 60mm x 40mm £18

### Tadmarton Parish Councillors

Richard Pinchin, <i>Chairperson</i>	780198
Steve Kingsford, <i>Vice Chairperson</i>	780558
Jane Fitzpatrick	780451
Joan Thomas	722770
<i>Vacancy</i>	
Tim Turner	780764
Steve Yeomans	780426
Christine Coles, <i>Parish Clerk</i>	276229

### Swalcliffe Parish Councillors

Lizzie Melvin, <i>(Chairperson)</i>	780735
<i>Vacancy</i>	
<i>Vacancy</i>	
Ben Benson	07970838304
Ryan Smith	788537
Mike Stanley	780729
Victoria Taylor	780206
Christine Coles, <i>Parish Clerk</i>	276229

**IMPORTANT!**  
**Last copy date for**  
**May issue is**  
**17th April 2017**



# The Firs Garage

[www.firs-garage.com](http://www.firs-garage.com)

Family business established 1960



**Tel: 01608 737349 / 737641      Hook Norton, OX15 5DD**



**Extensive range of new  
and used economical  
cars, hybrids & 4x4's**

**Part exchange welcome**

**Service**

**MOT Parts**

**Bodyshop**

**Fuel Shop**

**New Mitsubishi vehicle range  
to suit all your motoring needs  
Call Firs sales to book a test drive**

**ALL MAKES  
SERVICING  
COMPETITIVE PRICES**



## Quarry Nurseries

**Philip Gilbert**

Quarry Nurseries, Nr Banbury, Oxfordshire OX15 6DF  
Tel Home: 01295 670367 Nursery: 07903 655 267

**OPENING HOURS 2017**

**SPRING**

22nd April to 24th June - OPEN Tues, Wed, Thurs, Fri, Sat & Sun  
10am-5pm

**SUMMER**

29th June to 22nd July - Weds, Thurs, Fri, Sat - 10am -5pm

**AUTUMN**

6th Sept to 18th Nov - Weds, Thurs, Fri, Sat, Sun - 10am -5pm  
or dusk if sooner

[www.quarrynurseries.co.uk](http://www.quarrynurseries.co.uk)

**HOW TO  
FIND US**

After leaving Wroxton,  
on the A422, Banbury to  
Stratford road - Drive  
past the turning to  
Alkerton Shennington  
Recycle Centre on your  
left and take the next  
turning on the right,  
signposted Hornton and  
Horley. We are on the  
left about half a mile on  
Quarry Road

## The New Bus Timetable from Monday 24th October 2016

**3 Banbury and Shipston to Stratford Park & Ride**  
via Stratford Town Centre

**3W Whichford to Stratford Park & Ride**  
via Stratford Town Centre

Monday to Saturday

	SCH 3W	SCH 3W	SCH 3W	SSCH 3	3	3	3	3	3	3	3	3	3	3	3	3	3	3	3
Banbury Bus Station	...	...	...	...	...	...	...	...	...	...	...	...	...	...	...	...	...	...	...
Lower Tadmerton	...	...	...	...	...	...	...	...	...	...	...	...	...	...	...	...	...	...	...
Sibford Ferris School	...	...	...	...	...	...	...	...	...	...	...	...	...	...	...	...	...	...	...
Whichford, Bus Shelter	0703	0730	0830	...	...	...	...	...	...	...	...	...	...	...	...	...	...	...	...
Cherrington, Featherbed Lane	0713	0740	0840	...	...	...	...	...	...	...	...	...	...	...	...	...	...	...	...
Lower Brailles, The Park	0726	0753	0855	...	...	...	...	...	...	...	...	...	...	...	...	...	...	...	...
Shipston, Pettiphers Garage ARR	0737	0805	...	...	...	...	...	...	...	...	...	...	...	...	...	...	...	...	...
Shipston, Pettiphers Garage DEP	0737	0805	...	0737	0837	0937	1037	1137	1227	1337	1437	...	...	...	...	...	...	...	...
Shipston High School	...	0808	...	...	...	...	...	...	...	...	...	...	...	...	...	...	...	...	...
Ilmington, Red Lion	0747	...	...	0747	0847	0947	1047	1147	1247	1347	1447	1523	1527	1527	1647	...	...	...	...
Lower Quinton, the Orchard	0757	...	...	0757	0857	0957	1057	1157	1257	1357	1457	1533	1537	1537	1657	1757	...	...	...
Meon Vale	0802	...	...	0802	0902	1002	1102	1202	1302	1402	1502	...	...	...	...	...	...	...	...
Clifford Chambers, New Inn	0810	...	...	0810	0910	1010	1110	1210	1310	1410	1510	...	...	...	...	...	...	...	...
Stratford, Bridge Street ARR	0820	...	...	0818	0918	1018	1118	1218	1318	1418	1518	...	...	...	...	...	...	...	...
Stratford, Bridge Street DEP	0821	...	...	0821	0921	1021	1121	1221	1321	1421	1521	...	...	...	...	...	...	...	...
Stratford, Wood Street	0825	...	...	0825	0925	1025	1125	1225	1325	1425	1525	...	...	...	...	...	...	...	...
Stratford, Park and Ride	SGG	...	...	0935	1035	1135	1235	1335	1435	1535	...	...	...	...	...	...	...	...	...

### Codes:

HA: Journey operates via Halford at 1013  
NS: Not Saturdays  
SGG: Services Starts / continues to Stratford Grammar School  
SSCH: Saturdays and School Holidays  
To comply with driver hour regulations, these services connect at Shipston. The connection is guaranteed and passengers can remain on the vehicle and through ticketing is available.

**3 Stratford Park and Ride to Shipston and Banbury**  
via Stratford Town Centre

**3W Stratford Park and Ride to Whichford**  
via Stratford Town Centre

Monday to Saturday

	NS 3	SCH 3	3	3	3	3	3	3	3	3	3	3	3	3	3	3	3	3	3
Stratford, Park and Ride	...	...	...	...	...	...	...	...	...	...	...	...	...	...	...	...	...	...	...
Stratford, Wood Street	0615	...	...	...	...	...	...	...	...	...	...	...	...	...	...	...	...	...	...
Stratford, Bridge Street	...	...	...	...	...	...	...	...	...	...	...	...	...	...	...	...	...	...	...
Clifford Chambers, New Inn	...	...	...	...	...	...	...	...	...	...	...	...	...	...	...	...	...	...	...
Meon Vale	...	...	...	...	...	...	...	...	...	...	...	...	...	...	...	...	...	...	...
Lower Quinton, the Orchard	...	...	...	...	...	...	...	...	...	...	...	...	...	...	...	...	...	...	...
Ilmington, Red Lion	...	...	...	...	...	...	...	...	...	...	...	...	...	...	...	...	...	...	...
Shipston High School	...	...	...	...	...	...	...	...	...	...	...	...	...	...	...	...	...	...	...
Shipston, Opp Pettiphers Garage ARR	0640	...	...	...	...	...	...	...	...	...	...	...	...	...	...	...	...	...	...
Shipston, Opp Pettiphers Garage DEP	0640	...	...	...	...	...	...	...	...	...	...	...	...	...	...	...	...	...	...
Lower Brailles, The Park	0650	...	...	...	...	...	...	...	...	...	...	...	...	...	...	...	...	...	...
Cherrington, Featherbed Lane	...	...	...	...	...	...	...	...	...	...	...	...	...	...	...	...	...	...	...
Whichford, Bus Shelter	...	...	...	...	...	...	...	...	...	...	...	...	...	...	...	...	...	...	...
Sibford Ferris School	0702	...	...	...	...	...	...	...	...	...	...	...	...	...	...	...	...	...	...
Lower Tadmerton	0712	...	...	...	...	...	...	...	...	...	...	...	...	...	...	...	...	...	...
Banbury Bus Station	0725	...	...	...	...	...	...	...	...	...	...	...	...	...	...	...	...	...	...

### Codes:

HA: Journey operates via Halford at 1013  
NS: Not Saturdays  
SGG: Services Starts / continues to Stratford Grammar School  
SSCH: Saturdays and School Holidays  
To comply with driver hour regulations, these services connect at Shipston. The connection is guaranteed and passengers can remain on the vehicle and through ticketing is available.

These services will commence Monday 24th October 2016 to replace the withdrawn 23, 25, 50A and 222 services.



For bus enquiries please call 01564 797070 or email [businfo@johnsonsc.co.uk](mailto:businfo@johnsonsc.co.uk)  
For traffic and service updates please follow us on Facebook @johnsonsexcelbus and Twitter @johnsonstraffic

### Banbury & District Dial-A-Ride

A minibus with tail-lift to take the elderly or disabled and escort to Banbury (£5 return) door-to-door service. Book at least one day in advance. Operates Monday to Friday 9 am to 5 pm. T: 01295 263777 for details.

## Letters and Emails

From Daisy Sadler

### Thank You

Thank you to the good people of Taddy for cards good wishes/cakes, scones, homemade taddy meals, and a *Lampet* Sunday Lunch all delivered with genuine good wishes.

This is what goes in Tadmerton, it sure makes you feel better.

Thank you.

From Carole Moir

### Swalcliffe Litter Blitz

A big thank you to everyone who turned up to help with the Swalcliffe Clean Up recently. We had a good number of helpers this year which meant that we were all done in an hour and a half. The general opinion was that the amount of litter in and around the village has reduced in the last few years and certainly there were fewer full black sacks today. This is very good news and lets hope the downward trend continues. Special mention should go to young Rin Watkins who turned up with his whole family to help us and work towards his Beaver Badge. He enjoyed himself so much that he has already volunteered for next year !

### Introducing the new editor for *The Link*

Hello all,

After several years of magical editing *The Link*, Martin has decided to hand over the responsibility to me (Oh Ooh).

Thank you for doing a great job Martin, hopefully you won't want to make me disappear.

I thought it would be good if I would introduce myself to those who have never heard of me (if that is possible).

My name is Mery Wolke and I have lived in Lower Tadmerton for the last 20 years together with my partner Jane and our son Danny.

Originally from the Netherlands editing an English publication is bound to bring its challenges.

So should you find any mistakes then humour me and assume they have been made on purpose to keep you all on your toes.

If you have any adverts, interesting articles, letters/emails, important notices or just "wild" ideas, which need inclusion PLEASE remember the last date for submission is the 17th of the month.

Wishing you all happy reading.

Mery



**SWALCLIFFE & TADMARTON HORTICULTURAL SOCIETY  
SPRING SHOW**

**SATURDAY, 8th APRIL – 2.30-4.00PM  
TADMARTON VILLAGE HALL**

All entries to Malcolm Moodie on Thursday, 6<sup>th</sup> April between 7 and 9pm. You can also **telephone** (788159) your entries if you prefer or e-mail to LaeliaM@aol.com. Schedule as in the March 'Link' or please contact a member of the committee for a copy. We look forward to lots of entries and to seeing as many of you as possible during the afternoon. **NB:** It would be extremely helpful if you could enter on the Thursday evening rather than on the morning of the show. This year we have added two new cups. The Daphne Woodward Memorial Trophy for the Best Pot Plant in Section A and a Men's Cookery Tray for the best exhibit in Section B10. Any resident of Tadmarton and Swalcliffe may enter the show.

**SWALCLIFFE & TADMARTON  
HORTICULTURAL SOCIETY**

**PLANT SALE**

Saturday, 29<sup>th</sup> April 2017 in

**Swalcliffe Village Hall**

2.30 – 4.00pm

Plus

Tea \* Coffee \* Cakes

Your kind donations of plants and cakes would be much appreciated and it would be very helpful if they could be left at Swalcliffe hall between 10.00 and 11.00 am on the day. A name on each plant if possible please.

**GARDEN MACHINERY**

Bruce Hopkins. Groundcare Machinery.

01295 680711

**GARMENT ALTERATIONS AND CURTAINS MADE**

Linda Morse—garments, curtains and blinds made

01295 720930

**GENERAL STORES**

Sibford Stores & Post Office. Your local convenience store.

01295 788317

**HAIRDRESSER**

Annette Thomas. Hair & Beauty in your own home.

01295 721845

**INTERIOR DESIGNERS**

Fairfax Interiors. Re-design your home.

01608 685301

Rachel Berger Bespoke interior decoration service

07913 546867

**KITCHENS**

Hunt Bespoke Kitchens & Interiors. Kitchen Makers Joiners.

01295 721111

**ODD JOBS**

PR Handyman services help with your home

01295 722490

**PAINTER & DECORATOR**

C.A. Berger. Interior, Exterior Painting & Carpentry.

01295 738633

Mullins. Interior & Exterior.

01295 264117

Noahs Ark. Bespoke murals, Exterior & Interior decorating.

01295 811026

**OVEN CLEANING**

Cookerburra Oven Cleaning Services – Banbury

01295 277789

**PERSONAL TRAINER**

Jackie Mitchell. Get Fit, Lose weight.

07915 080182

**PHOTOGRAPHER**

Elizabeth Melvin. Weddings, Portraits & Other work.

01295 780735

**PLUMBING & HEATING**

Blueprint all aspects of plumbing and heating

01295 738955

David Butler plumbing and heating

01295 780668

PLT Plumbing all domestic plumbing

01295 368150

**PRINTING**

Parchments. Fast printing and quality printing.

01865 747547

**PUBLIC HOUSES**

The Lampet Arms. Accommodation, ales, food

01295 780070

The Stags Head Home cooked food and good ales

01295 788660

**SCHOOLS**

Sibford School. Independent co-educational

01295 781203

**STOVES**

Iron and Wood. Wood Burning stove centre.

01295 253916

**TREE WORK**

Trinity Oak. Tree felling, landscape gardening, fencing

01295 780795

## DIRECTORY OF LOCAL SERVICES

Also Open to Non Advertisers £10.00 per annum.

### ACCOUNTANT

Christopher Dean & Co. Tax advice VAT, Year End. 01295 788104

### AGRICULTURAL SERVICES

David Lovesey. Rural Services, Lawns to Fields 01295 788298  
Paddockwise. Grass Maintenance, Spraying. 01295 780135

### BEAUTY

Serenity at Sibford. All beauty treatments. 01295 788463

### BED & BREAKFAST

The Loft. Central location in Swalcliffe. 01295 788677

### BEAUTY TREATMENT

The Croft—massage, skincare, manicure, waxing etc 07841 657764

### CARPET CLEANING

Bone-Dry. Organic carpet cleaning. 01295 780909

### CARPENTER

N.D.Smith. Quality Joinery work. 01295 780970

### CATERING

Gill Judd. Hire of China & return dirty. 01295 780243  
Miss T Catering. Catering Parties, Celebrations. 01295 780206

### CHILDREN'S NURSEY

The Ark. Full day care for children. 01295 780580

### CHIMNEY SWEEP

Your local qualified chimney sweep—Jonathan Perry 07557 058051

### COLOUR ANALYSIS

Choosing the best colour for you with Annie Broe 01295 780637

### COMPUTER SERVICES

Bloxham Computers Ltd. Repairs, problem solving, design W.Sites 0800 6129258  
Oxon Computers. PC Repairs. Desktop Techie. Friendly Advice. 01295 788766

### COUNSELLING

The Banbury Therapy Centre. Free initial assessment available. 01295 231320

### DANCE

International Dance with Tracy Lean 01295 780710

### ELECTRICAL

K.M. Electrical contractors, domestic & industrial. 01295 722373  
Neil Megson. All electrical work. 01295 263665

### ENTERTAINERS

Magic Martin. Magician for parties. Close Up Magic. 01295 788206

### GARAGE SERVICES

Isis Rescue (Banbury). Servicing, 24hr. Roadside assistance. 01295 711555  
The Firs Garage. New & Used cars, servicing, Parts. 01608 737349

### GARDEN SERVICES

Quarry Nurseries vegetables, border and baskets 07903 655267  
Taddy Black Gold. Cart Horse Manure. 01295 780700

## The Lampet Arms



*Phyllis & Des Welcome You*

### Opening Hours

**Mon to Fri:** 11am - 2pm. 5pm—11.30pm

**Saturday:** Open All Day

**Sunday:** 12noon – 5pm

### Occasional Live Entertainment

Quiz - Darts - Dominoes - Aunt Sally Team

### Pie 'n Pint, plus traditional Pub Grub

Range of Cask Ales + Hooky beers, Fine Wines, Home Cooked Food

### Curry Night

Come and try our curries on a Wednesday Night

### Pool Room.

Now open, come and have a game. Juke box for music

### Take-Away Meals

Give us a ring to find out what's cooking on the take-away menu. Plus maybe a flagon of beer to take home.

### New Functions Room

We have a newly refurbished large first floor room available, For Private Parties/Family gatherings/Formal Meetings. Catering also available.

### B&B Accommodation

High quality en-suite rooms in the old stable block.

### Saturday Night Music

Mostly every other Saturday. Come and support your Local and have a sing along and maybe a little dance.

### Sunday Roast 12 noon.

Come and try our lovely Sunday Roast, choice of five meats. Just £12.00 each, you won't be disappointed.

### Seniors' Lunch

Second Monday of the month, 2 courses.

Set meal at £6.00 per person. Other meals at menu prices.

### Warm Welcome

Something you can be sure of in our traditional Village Pub.

**Telephone 01295 780070**



**ROSIE WESTON IS THE 2016 EUROPEAN  
AG UNDER 20'S TRIATHLON CHAMPION**

## 14 APRIL 2017 TEAM WESTON FUNDRAISER

**1pm - 4pm**

**Come support, meet and greet your  
local triathlete Rosie Weston**

Have you got "stuff" no longer of use to you but could be priceless to somebody else, now is your chance to sell them on.

Clear out your house, create space and in the process, make some money for yourself and Team Weston.

Should you not wish to have your own table, we have a 'donated items table' from which all proceeds will go to Team Weston.

**Book your table at  
our tabletop sale.**

**Your chance /  
excuse to sort out  
all those unwanted  
items clogging up  
your house/garage**

**Let your kids take  
part in the Easter  
egg hunt.**

**Sublime raffle  
prizes including;  
Giant Easter Egg  
Golfing Prize  
Special edition  
Champagne**

**Coffee /Tea / Cake**

**Tadmorton Village Hall**

**To book your table  
contact Julie Lingwood  
on;**

**01295 788813**

**Limited number of tables  
so DON'T delay!**

**For only £6 per table can  
you afford to miss out?**

## Bruce Hopkins Ltd

**Domestic & commercial  
Groundcare Machinery**



**Sales, Hire, Service, Spare Parts**



**Shenington Airfield**

**Tel. 01295-680711**

**Jeff Deane 07860-742701**

**www.brucehopkins.co.uk**

## Photographer

*Available for  
Weddings, events, por-  
traits and other work,*

*Please call  
Elizabeth Melvin  
01295 780735*

*Portfolio available to view at  
www.elizabethmelvinphotography.  
co.uk*

*Member of the Bureau of Freelance  
Photographers*

## N.D. SMITH Carpenter & Joiner

*Specializing in quality joinery  
work*

*Windows, doors, stairs, roofs,  
Loft conversions,  
Conservatories, etc.*

*All aspects of building work  
undertaken, from small  
extensions to  
new house building and  
Barn conversions.*

*All work carried out by  
qualified tradesmen*

**TEL: 01295 780970**

*nicksmith.tadmorton@btinternet.com  
For Free estimates and advice*

## Solution to Codeword on page 38

	6	T		15	F		20	B		20	B		20	B		14	S		16	H								
21	J	8	U	V	3	E	7	N	11	L	10	3	E		10	L	11	24	8	U	12	O	2					
		23	X		9	C		17	P		3	E		1	A		8	U		12	O							
25	3	W	E	1	A	2	K	7	N	E	14	S	3	E	14	S		1	A	23	10	3	E					
		5	D		10	L		5	D		25	W		17	P		10	L		11	I							
5	D	12	O	4	Z	3	E	7	N		17	P	1	A	6	T	16	H	12	O	12	O	22	13	Y			
				14	S			20	B		23	X		3	E								1	A				
1	A	20	B	13	Y	14	S	19	M	1	A	10	L		1	A	19	20	B	11	I	3	E	7	N	6	T	
		1	A					26	R		15	F		13	Y		7	N										
17	P	26	R	12	O	17	P	16	H	3	E	6	T	11	I	9	C		15	F	11	I	15	F	6	T	16	H
		20	B			26	R		15	F		23	X		9	C		19	M		13	Y						
15	F	1	A	2	K	3	E		1	A	10	L	6	T	1	A	26	R	17	P	11	I	3	E	9	C	3	E
		26	R		15	F		9	C		8	U		3	E		9	C		12	O							
5	D	11	I	18	V	11	I	5	D	3	E		26	R	1	A	5	D	11	I	1	A	6	T	12	O	26	R
		9	C		23	X		5	D		3	E		12	O		10	L		7	N							



## TADMARTON VILLAGE HALL

Well equipped kitchen, tables and chairs available.

Children's parties from £10.

Letting rates from £4.00 per hour.

Special all day booking rates.

To book the hall telephone

**Carol Luke 01295 788355**

## Iron and Wood Ltd

Your Local Stove Supplier



Visit our showroom at

Beaumont Road, Banbury, OX16 1RH  
(opposite Jewson)

Ample free parking

T: 01295 253936  
E: info@ironandwood.co.uk  
www.ironandwood.co.uk



## Magic Martin



Comedy close-up magic

Add some magical merriment  
to your event

Member of the Magic Circle  
International Brotherhood of Magicians  
and Equity

01295 788206  
www.magicmartin.co.uk

## COUNTY Oil Tank SOLUTIONS

— The Oil and Water Tank Specialist —

- Domestic Oil Tank Installations
- Safe Disposals and Tank Servicing
- AGA and Boiler Servicing
- Fuel Depots
- NEW Smart Gauges that link to your phone always know what's in your oil tank wherever you are

24 Hour

Emergency Call Out  
for Failed or Leaking  
Oil Tanks and Pipework



07799 643455

james@countyoil tanksolutions.com

10 YEARS IN THE BUSINESS

Is 2017 the  
year to have  
your Tank  
serviced or  
changed?

## TADDY BLACK GOLD

Cart Horse Manure  
at its best

*"Manure compost on the side  
as a snug blanket makes, like  
Midas, everything it touches  
turns to gold."*

## PLT PLUMBING

MILCOMBE, BANBURY

FOR ALL YOUR DOMESTIC PLUMBING

FULLY QUALIFIED ENGINEER

T: 01295 368150 M: 0742 5982855

E-mail: info@pltplumbing.co.uk

## David Butler Plumbing and Heating

Oil & Gas Boiler servicing, repair and replacements.  
Unvented Hot Water cylinder installation and maintenance.  
All other aspects of plumbing and heating.

Contact David / James  
01295 780668 / 07760977058  
dbutlerheating@gmail.com



## BALLROOM & LATIN

8wk. Social Dance Course for Beginners starts 24th April  
(please note that this includes Bank Holiday dates) Course fee £56pp

Learn the basic steps of Cha Cha, Waltz, Jive and Social Foxtrot  
~ Ideal for holidays and dances ~

*Singles & Couples welcome*

(Pre-registration only)



**JUBILEE PARK HALL, BLOXHAM, OX15 4LW**  
**Mondays 8.15pm-9.15pm**

★ *Classes taught by former British & International Dance Champions*

t. 01295 788079 e. [info@dance-addiction.co.uk](mailto:info@dance-addiction.co.uk)

**SOCIAL DANCE OUTINGS | PRACTICE | PRIVATE LESSONS | WORKSHOPS | DANCES  
PARTIES | DANCE WEEKENDS | OPPORTUNITIES FOR EXAMS | WEDDING DANCES**

## ANY ONE FOR A CUPPA?



**Tadmorton Village Hall on Saturday 13th May 10.30 - 12.30.**

Entry £3. To include tea, coffee, homemade scone, jam and cream.

Cake stall, jams, chutneys and local honey.

Raffle and lucky dip among other things.

Please come and support this very worthy cause.

Any cakes or raffle prizes would be very much appreciated

Contact Shirley Wackrill 01295 780596

**All proceeds to Katharine House Hospice.**



domestic, commercial and industrial  
electrical services

**Keith McCormack**

t: 01295 722373

m: 07968 775616

21 Collins Drive,  
Bloxham OX15 4FR



## MULLINS PAINTING & DECORATING CONTRACTORS

**Domestic & Commercial  
Interior & Exterior**

**Fully Insured**

**Competitive Pricing**

**References Available .**

**Free Quotations**

**We also provide general  
maintenance to  
your home or office.**

**TEL: 07815 288909**

**01295 264 117**

WEBSITE: [mullinsdecor.co.uk](http://mullinsdecor.co.uk)

EMAIL: [lee@mullinsdecor.co.uk](mailto:lee@mullinsdecor.co.uk)

## TWO COUNCILLOR VACANCIES

There are currently two vacancies on Swalcliffe Parish Council. A Parish Council represents the needs and concerns of all age groups within the community. The post does not take up large amounts of time but the time you give will be invaluable to your community. It will be an opportunity to understand how local government works and you will make a positive contribution to others as well as developing your own knowledge. There are training courses available for Councillors and the current Parish Council is committed to making a positive difference in the community. The Parish Council meet every six weeks on a Tuesday night in the village hall.

Please contact the Parish Clerk, Christine Coles for more information on 01295 276229 or [swalcliffepe@btinternet.com](mailto:swalcliffepe@btinternet.com).



# PARCHEMENTS of OXFORD FABRIC PRINTING

We can now print onto a  
range of washable fabrics  
with any design or  
photographs of your choice.

**For Business:** Ideal for exhibition  
back drops, table covers, banners  
or flags.

**For your family or friends**  
Personalised banners, tablecloths,  
cushions, to celebrate birthdays,  
anniversaries,  
weddings and  
christenings.

## FLOORING AND FURNITURE GRAPHICS

We can now offer graphics suitable for heavy wear, floors, filing  
cabinets and tables. Make your business stand out.

Call us today to  
find out more

Tel: 01865 747547

e: [print@parchmentuk.com](mailto:print@parchmentuk.com)

[www.parchmentuk.com](http://www.parchmentuk.com)

PARCHEMENTS  
of  
OXFORD



[www.sibfordschool.co.uk](http://www.sibfordschool.co.uk)

*Sibford School is an independent co-educational school  
that welcomes pupils from the age of 3-18*

April 2017

## Sibford School goes bananas!

Sibford School went bananas to mark  
Fairtrade Fortnight 2017 (27 February – 12  
March).

Following persuasion from pupils,  
the school's catering company, Thomas  
Franks Ltd, has agreed that in future, only  
Fairtrade bananas will be served on the  
lunchtime fruit counter.

Sixth form pupil Finn, a member of the  
school's Fairtrade Group, explained: "We  
are delighted that the kitchen staff has  
started providing Fairtrade bananas to  
students at lunchtimes, paying the premium  
price for them in the name of fair pay for  
those further down the production line.

"We were able to announce the change



to the fruit suppliers during Fair Trade  
Fortnight when we also held special break  
time sales selling Fairtrade chocolate  
bars, jelly beans and chocolate eggs and  
generally raising awareness of the Fairtrade  
campaign."

Mark Higgins, catering manager at  
Sibford School said: "For a long time now  
we have been using Fairtrade tea, coffee  
and sugar, but our fruit suppliers have  
tended to differ depending on who has had  
the best deal.

"However, we like to work closely with  
the pupils at the school and, following  
their well-researched persuasion, we have  
agreed to ensure that, from now on, we  
will only supply Fairtrade bananas."

## FUN IN THE COUNTRY

Sibford's Fun in the Country holiday  
activity club will be operating over the  
Easter break from 11 ~ 13 April and 18 ~  
21 April. To book a place call Elspeth on  
01295 781216.



near Banbury, Oxfordshire OX15 5QL



## Whole School Open Morning

from 9.45am ▶ Friday 28 April

for further details visit the website

[www.sibfordschool.co.uk](http://www.sibfordschool.co.uk)

or call 01295 781203

## TADMARTON PARISH COUNCIL NOTICE

In response to local concerns, car parks looked after by the Parish Council, and stretches of public highways within the Parish, will be regularly monitored for potentially abandoned vehicles. Those without the appropriate tax and MOT will be reported to the appropriate authority.

## Advance Notice

The Annual Scarecrow Festival starts 8th July  
ending 2 weeks later on July 22nd when there will be  
a Scarecrow concert in St Nicholas when prizes will  
be presented to the winners.



## Tadmarton Village Hall 250 Club


### February Winners

Jane Compton.	£15.
M. Upton.	£10
D. Hemfrey.	£5.
M. Taylor.	£5.

### March Winners

J. Irwin.	£20.
J. Sadler.	£15.
P. Jackson.	£10.
V. Lovsey.	£10.
M. Upton.	£5
R. Asser.	£5

For tickets or information Ring Susan on 788980



**HUNT BESPOKE**  
KITCHENS & INTERIORS

t: 01295 721111 - mail@huntbespokekitchens.com  
High Street, Bloxham, OX15 4LT  
www.huntbespokekitchens.com

## B & B / Self Catering

### *The Loft at Forge House* Central location within Swalcliffe

**Double Bedroom,  
Sitting Room, Kitchen and  
Shower Room**  
**Contact Carole Ralph**  
**01295 788677**



### Children's Day Nursery Epwell

- Care for children aged 2 to 5 years
- Full and part time places available
- Open Monday to Friday 9.00am – 4.00pm.
- Ofsted rating: Outstanding
- Competitive rates
- Early years grant registered.

The nursery provides excellent opportunities for children to explore and learn through play under the guidance of highly trained, experienced and caring staff.

Ring Julia on: 01295 780580 or  
e-mail [Julia@arknursery.net](mailto:Julia@arknursery.net)



## Codeword April 2017

	6		15		20		20		20		14		16	
21	8	18	3	7	11	10	3		10	11	24	8	12	26
	23		9		17		3		1		8		12	
25	3	1	2	7	3	14	14	3	14		1	23	10	3
	5		10		5		25		17		10		11	
5	12	4	3	7		17	1	6	16	12	10	12	22	13
			14		20		23		3				1	
1	20	13	14	19	1	10		1	19	20	11	3	7	6
	1				26		15		13		7			
17	26	12	17	16	3	6	11	9		15	11	15	6	16
	20		26		15		23		9		19		13	
15	1	2	3		1	10	6	1	26	17	11	3	9	3
	26		15		9		8		3		9		12	
5	11	18	11	5	3		26	1	5	11	1	6	12	26
	9		23		5		3		12		10		7	

A B C D E F G H I J K L M  
N O P Q R S T U V W X Y Z

1	2	3	4	5	6	7	8	9	10	11	12	13
14	15	16	17	18	19	20	21	22	23	24	25	26

\*\*\*\*\*Solution on PAGE 43\*\*\*\*\*

CODEWORDS are like crossword puzzles - but have no clues! Instead, every letter of the alphabet has been replaced by a number, the same number representing the same letter throughout the puzzle. All you have to do is decide which letter is represented by which number! To start you off, we reveal the codes for two or three letters. When you've filled in these letters throughout the puzzle, you'll have enough clues to start guessing words and discovering other letters.



**The Stag's Head**  
The Green  
Swalcliffe  
Banbury OX15 5EJ  
01295788660  
[www.the-stags-head.co.uk](http://www.the-stags-head.co.uk)

**Opening Times**  
Monday-Friday 11.30-2.30, 05-11.00 (Tue 5.00-11.00)  
Saturday All day, Sunday 12.00-8.00

**Traditional Pub**

**New Menu**

**Home cooked food**

**Seasonal Menu, Sunday roast, Greek dishes**

**Wednesday pie and pint, specials,**

**Friday fresh battered fish & chips**

**Greek night 16 courses last Saturday of every month**

**Selection of quality wines, Prosecco, Champagnes**

**Coffee morning last Wednesday of every month**

**Folk music every second Tuesday of every 8.30 pm**

**Beer garden**

**Bed & Breakfast**

**Walkers welcome, Dog friendly**









## Serenity at Sibford

Gautherns Barn (nr Temple Mill)  
01295 788463 07891 220275

### Celebrating 10 Years of Relaxation and Pampering!

Specialising in Guinot and Environ Facials & Skincare  
OPI Manicures and Pedicures, Lava Shell and Hot Stone Deep Tissue Massage  
All Types of Blemish Removal - Age Spots, Milia, Skin Tags, Warts etc  
Shellac, Waxing, Eyelash Tinting, Jane Iredale Make-Up,  
Reflexology, Indian Head Massage  
Fully Equipped Pilates Studio

Open Monday to Saturday with Jo and Vanessa  
(20+ years experience)

Free Private Parking email: [jo@serenityatsibford.co.uk](mailto:jo@serenityatsibford.co.uk)  
[www.serenityatsibford.co.uk](http://www.serenityatsibford.co.uk) [www.pilatesinsibford.co.uk](http://www.pilatesinsibford.co.uk)

### FAIRFAX INTERIORS

*The Old Bakery, High Street, Lower Brailes,  
nr Banbury, Oxfordshire OX15 5HW  
Tel: 01608 685301  
e-mail: [info@fairfaxinteriors.com](mailto:info@fairfaxinteriors.com)  
website: [www.fairfaxinteriors.com](http://www.fairfaxinteriors.com)*

For over 20 years **Fairfax Interiors**, under the guidance of owner Caroline Elliott, has helped people throughout the United Kingdom to improve their homes. Fairfax has one of the largest collections of designer fabrics, wallpapers and trimmings in the south of England. This coupled with a passion for design and an unerring ability to fulfil clients needs make this a unique Interiors Design Practice.

Soft furnishings and curtains are made in house by an exceptionally skilled team of seamstresses; fitting and upholstery are carried out to exacting standards ensuring total customer satisfaction. Fairfax provides project management for full refurbishment, as well as dressing houses for sale.

Caroline likes to support local and emerging designers together with more established names such as Zoffany, Designers Guild, Andrew Martin and Pierre Frey to name just some from the vast selection available to view in the friendly and easily accessible showroom and design studio.



### Miss T Catering

Miss 'T' Catering.  
Catering for events such  
as:  
Anniversaries, Weddings,  
Christenings,  
Birthday parties,  
Funerals  
And private dinner parties.

~.~.~  
Also available  
Cutlery and Crockery Hire.

Contact Victoria Taylor on:

Mob: 07841 910037  
Home: 01295 780206

### The Croft Beauty Studio

Skincare, massage and beauty  
treatments in Epwell

- facials using Neal's Yard Organic Remedies
- Swedish and deep tissue massage
- manicure / pedicure / Gelish gel polish
- lash & brow tinting / shaping
- waxing including Brazilian and Hollywood with hot wax
- spray tan

For further information contact Carol

Telephone: 07841 657764  
[croftbeautystudio@btinternet.com](mailto:croftbeautystudio@btinternet.com)  
[www.thecroftbeautystudio.co.uk](http://www.thecroftbeautystudio.co.uk)  
[www.uk.nyorganic.com/shop/croftbeautystudio](http://www.uk.nyorganic.com/shop/croftbeautystudio)

**Do you have difficult or  
confusing emotions and  
want to share them with  
a qualified counsellor?**



**Do you feel you have  
more to offer and want to  
develop personally?**

**The Banbury Therapy Centre offers safe  
affordable counselling and  
psychotherapy for a variety of issues  
and life situations.**

**For your FREE ASSESSMENT phone  
01295 231320 to see how we can help,  
or look on our website:**

**[www.banburytherapycentre.com](http://www.banburytherapycentre.com)**



## SWALCLIFFE PARISH COUNCIL

### **Draft Notes from Parish Council Meeting held 28<sup>th</sup> February 2017**

The first part of the meeting was inquorate and therefore only reports could be given.

#### **Open Forum**

The school wall is collapsing where the ivy has been removed. The school are aware of the problem and dealing with it.

#### **Update on Garage Lease**

A market value report had been circulated by Mr Hill. Councillors will be given more time to read the document. A public meeting in late March/April will be arranged to take this forward.

The normal meeting agenda continued at 7.30pm as a third Councillor arrived.

#### **Election of Chairperson**

Cllr Melvin was proposed to be Chair. She signed the Declaration of Acceptance of Office form.

#### **To approve the minutes of the meeting of 1<sup>st</sup> November 2016 and 17<sup>th</sup> January 2017**

Amendments were made to the minutes of 1<sup>st</sup> November and then approved and signed.

The minutes of 17<sup>th</sup> January were approved and signed.

#### **Matters Arising**

*Broadband update* - Installation of the Sugarnet system on the Church tower could begin in late March/early April if all goes well dependant on final confirmation from the church authorities.

#### **Update on Woodland Play Area**

A meeting was held in January to look at the planning application. A meeting has been held with Nicole O'Donnell of OPFA to discuss grant funding.

#### **Finance**

The following payment was approved:  
£144.00 to Brethertons Solicitors (garage lease work)

#### **Planning**

*16/02413/LB, Replacement of windows and doors to back elevation of property in timber stained walnut to the same design as existing frames at The Old Stables, 1 The Tithings.*  
Approved.

#### **To receive an update on the defibrillator and phone kiosk**

Community Heartbeat Trust have confirmed that an emergency phone can be fitted. There are two options either mobile or landline. These are extra costs. The cheapest option is the mobile one. A test phone has been sent to the Clerk to check mobile phone signal. If there is no mobile phone signal the landline option will be fitted free. The other alternative is for Sugarnet to provide a handset phone which will connect with the could be affected.

*Continued on page 14*

*Continued from Page 13*

public phone network. There are reservations that if there is a power cut, the equipment could be affected.

**To receive an update on the culvert in Brick Row**

Discussions are ongoing.

**To receive an update on the Conservation Area Review**

The Parish Council are waiting for an update from CDC.

**Date and Time of next Meeting**

Tuesday 11<sup>th</sup> April 2017, Parish Council meeting at 7.30pm followed by Annual Parish Meeting at 8pm

**TADMARTON PARISH COUNCIL****Draft Notes from Parish Council Meeting held 20<sup>th</sup> February 2017****To approve the minutes of the last meeting of 9<sup>th</sup> January 2017**

The minutes of the last meeting were approved and signed.

**Review of Action List**

Defibrillator for Lower Tadmarton – A site meeting is to be arranged by the Parish Clerk with the homeowner and electrician.

**Review of Conservation Area**

The consultation period ended on 3<sup>rd</sup> February and CDC received four responses. The Parish Council are waiting to be told about next steps by CDC.

**Assets of Community Value**

CDC have suggested that The Orchard (behind Bank Farm House) is registered as an asset of community value. Cllr Fitzpatrick to contact the owner.

**Amendment to allotment agreement**

A new paragraph was agreed and inserted concerning plots which are not looked after. The new wording will be included in the agreement.

**Finance**

The following payments were approved:

£300.88 to Parish Clerk (hours)

£24.20 to HMRC

£30.41 to Parish Clerk (expenses)

£39.00 to Parish Clerk (mileage)

It was agreed to give a donation of £100.00 to the Link.

*Continued on Page 15*

**David Lovesey**

And associates  
Rural services contractors

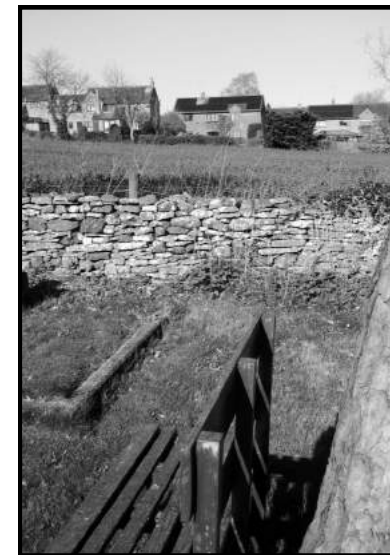
Arboriculture to Zigzag harrowing

Lawns & Gardens to Fields

Need a job done one of our friendly and professional team should be able to help

Home : 01295 788298

Mobile : 07984 879891



**Highlands from the churchyard**

***Sibford Stores & Post Office***

***Sibford Ferris OX15 5RG***

***Tel: 01295 788317 / 788348***

***Your Local Convenience Store***

Your local newsagent, we deliver newspapers and magazines 7 days a week to all the surrounding area and have a wide selection of newspapers and magazines available in the shop.

Place your regular order today

- \* Bread, cakes and savouries baked on the premises.
- \* Mailing service available on the premises
- \* Agents for Dry Cleaning and Laundry
- \* Chilled and frozen foods, groceries, cigarettes, beers, wines, spirits, fresh fruit & vegetables, pet foods, medical and toiletries, and lots more

Telephone your grocery order for free local delivery 7 days a week.

**OPENING HOURS: Monday to Saturday 7.30 am to 7.30 pm**  
**Sunday 7.30 am to 4.00 pm**



more than just a pick me up ...  
we do other things as well, you know!

Your one-stop shop for all cars and commercials.  
Try us, you'll be glad you did

- **Servicing and Repairs**
- **MOT's** (Class 4 and 7)
- **Engine Diagnostics**
- **Tyres and Exhausts**
- **24hr Roadside Assistance**



**ISIS RESCUE (Banbury)**

T. 01295 711555

F. 01295 714133

e. banbury@isisrescue.co.uk

Home Farm, Warkworth Road,

Warkworth, nr Banbury, Oxon

OX17 2JH

## WELCOME TO TADMARTON

Please contact Tim Turner on 01295 780764  
if you have recently moved into  
Tadmarton or if you know someone who is a  
new arrival.

He will be delighted to call with one of the  
"Welcome to Tadmarton" leaflets.

*Continued from Page 14*

### Planning applications

Three applications had been received since the last meeting:-

16/02612/LB, Internal alterations at Grange House, Main Road. No objections.

16/01215/F, Demolition of an existing timber conservatory and construction of a new kitchen extension (revised scheme of 16/00354/F) at Mayfield Cottage, Hollow Road. Under consideration.

17/00196/LB, Alterations to existing coach house to provide additional ancillary residential use (gym/studio) at Tadmarton Grange, Main Road. Under consideration.

An update was given on three older applications:-

16/01477/F, Alterations to and extension of barn and conversion to form one dwelling at redundant barn, South West of Fulling Mill, Sandfine Road. Application withdrawn.

16/02516/F, Detached house and garage and associated works on land to rear of 17 Old Glebe. Approved by CDC.

16/00365/TCA, Fell 1 Ash located on unsurfaced land between College Farm and The Grange. CDC has no further comments or objections.

### Cllrs Reports

Dog mess has been reported outside Brookfield Rise near to the notice-board. A new dog bin will be considered at the next meeting.

In response to local concerns, it was agreed a note be put in The Link to advise that car parks, looked after by the Parish Council, and stretches of public highways within the Parish, will be regularly monitored for potentially abandoned vehicles. Those without the appropriate tax and MOT will be reported to the appropriate authority.

An email has been received from the Allotment group asking for a bench. It would be beneficial for partners and to appreciate the view. The Parish Clerk has forwarded a grant application form to them and this will be carried forward to the next meeting.

### Date and Time of Next meeting

3<sup>rd</sup> April 2017, Parish Council meeting in the Annex followed by Annual Parish Meeting at 8pm in the main hall.

### SWALCLIFFE PARISH COUNCIL MEETING ANNOUNCEMENT

ALL PARISH COUNCIL MEETINGS WILL NOW START  
AT 7.30PM INSTEAD OF 7PM

THE NEXT MEETING WILL TAKE PLACE ON  
TUESDAY 11<sup>TH</sup> APRIL 2017  
PARISH COUNCIL MEETING AT 7.30PM  
FOLLOWED BY THE ANNUAL PARISH MEETING AT 8PM  
IN SWALCLIFFE VILLAGE HALL

## Cottage to Let

Recently renovated cottage in the quiet village location of Lower Tadmerton, available for short breaks, short term or medium term lets.

Off road parking for one vehicle, 2 double rooms, upstairs and downstairs wet rooms, private gardens.

Living room has corner settee that converts to a double bed also. Log burner.  
Temperature controlled electric heating, throughout.

For more information please contact Jane on 01295 252551  
Daytime. 01295780451 Evenings. 07711794133 Mobile.



## TRINITY OAK

### TREE FELLING & LANDSCAPE GARDENING SERVICES

01295 780795 OR MOBILE 07497 538 180 (ANYTIME)  
PLEASE ASK FOR JULIAN

#### WORKING 7 DAYS A WEEK

- ALL TREES FELLED, TRIMMED, SHAPED & PRUNED
  - 24 HOUR EMERGENCY CALL OUT
- HEDGES REDUCED, REMOVED & LAYED
  - LARGE TREES TOPPED & FELLED
  - STUMPS REMOVED & DESTROYED
  - FIRE LOGS SIZED TO ORDER
  - TREE SURVEYING
  - NEW FENCES ERECTED
- ORNAMENTAL BARK WORK UNDERTAKEN
  - PATIO'S, PATHS & STEPS LAYED
  - DECKING
  - PONDS & LAKES
- RUBBISH REMOVED OR WOOD CUT FOR YOUR OWN USE

FREE QUOTATIONS WITHOUT OBLIGATIONS  
FULLY INSURED  
NO JOB TOO LARGE OR TOO SMALL  
BOOK YOUR WORK IN NOW



Sunset over Tadmerton

### Annette Thomas Freelance Hair and Beauty Consultant

Why pay salon prices.  
Why not have your hair done in the  
comfort of your own home.  
Established 22years.

01295 721845  
Mobile 07786 804851



### CHIMNEY SWEEP

Jonathan Perry  
*Guild of Master Chimney  
Sweeps Qualified*  
**Open fires, Inglenooks,  
Wood burners, Agas**  
*All work certificated for  
house insurance purposes*

For a clean, friendly and professional  
service please contact me on:  
Tel: 07557 058051  
Email: jperrychimneysweep@gmail.com

## The Firs Garage

- All Makes Vehicle Servicing
- Competitive Prices
- Factory trained mechanics
- MOT • Parts • Bodyshop • Fuel
- Large site with easy parking
- Extensive range of new and used vehicles

ALL MAKES SERVICING

Hook Norton • Oxon • OX15 5DD (1 mile north of Hook Norton Village)  
Tel: 01608 737349/737641 • [www.firs-garage.com](http://www.firs-garage.com)

Family Business established 1960

## Holiday Cottage in Cornwall

On the beautiful north coast in Poldark country, character cottage set in a large south-facing enclosed garden, is available for holiday lets.

**Scrumbles Hollow sleeps six in three double bedrooms, one with ensuite shower room, plus a family bathroom. Full central heating.**

The spacious cottage has an open fire place in a cosy sitting room, while the dining room boasts a log burner. Fully equipped kitchen and separate utility room for sorting out sportswear after a day on the beach or walking the breath-taking countryside.

**Lots of good local pubs and restaurants, shops and galleries. Excellent public transport connections, including Newquay airport (half an hour by car).**

For more information, please contact Linda on 01295 780 242 or 07973 226 032 or [linda.lane@btconnect.com](mailto:linda.lane@btconnect.com)

## Tadmarton Allotments



On a clear night in early March, the Year 5 children from Sibford Gower Primary School pitched their tents in the school grounds for a mid-week, overnight camp out. They had been learning about electricity and, in a brilliant example of child-led learning they decided to find out, at first hand, what it would be like to experience life without electricity.

The challenge was to spend a night in the school grounds without using anything containing an electrical circuit. Our local scout group, 1<sup>st</sup> the Sibfords kindly lent us tents. While the children could bring bedding, a toothbrush and flannel, warm clothes and even a cuddly toy, they were not allowed to bring torches, mobile phones, games consoles or tablets! Sibford Gower has no street lights, which made the setting perfect for this night time lesson.

After they had pitched their tents, the children made their own burgers, which they cooked on the campfire. They played games and sang songs around the fire for entertainment, and then washed by candlelight before settling down for a night under the stars.

Staff members Mr Cameron and Mrs Williams and parent, Mrs Arniboldi, took turns to sit sentry through the small hours before waking the children to have a breakfast of bacon sandwiches cooked on the barbecue. Then it was time to pack up and go back into the classroom to start morning lessons.

Teacher, Mr Cameron, said, "This was a really successful night because it involved the children in lots of different aspects of camp craft, but we also achieved our learning objective of experiencing life without electricity. It was a very important experience for a number of the children, particular those who have confidence issues."

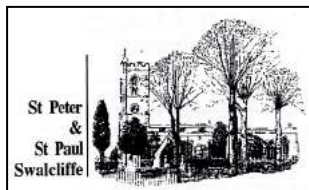
Pupil, Thomas Platt, said, "It was a good opportunity to find out different things about your friends. Peter is really good at putting up tents!" All the children agreed with Eve Townsley that although the night had been great fun, "Living without electricity is really, really hard." For more details, please log on to [www.sibford-gower.oxon.sch.uk](http://www.sibford-gower.oxon.sch.uk).

**Jane O'Sullivan, Headteacher**





## St. Peter & St. Paul Swalcliffe services



**Sunday 2nd April** - 9.30am, Holy Communion  
(Rev'd John Tattersall)

**Sunday 16th April (Easter Day)**  
- 6.00am, First Communion of Easter  
(Rev'd Ronald Hawkes)

11.00am, Family Communion  
(Rev'd Elisabeth Hawkes)

**Sunday 23rd April** - 9.30am, Holy Communion  
(Rev'd Elisabeth Hawkes)

**Sunday 30th April** - 6.00pm, Evening Service  
(Rev'd Ronald Hawkes)

In addition there will be a Benefice Eucharist and Procession of Palms on 9th April at Epwell at 9.45am, led by the Reverend Ronald Hawkes.

**The Reverend John Tattersall,**  
Abingdon House, Park Lane, Swalcliffe,  
Banbury, Oxfordshire OX15 5EU  
01295 780283, Mobile: 07711 733978

## SWALCLIFFE VILLAGE HALL

Your village hall is available for meetings, fund-raising events, functions, and children's parties.

£10 for the first hour, £5 per hour thereafter

Well-equipped kitchen. Audio-visual equipment.

Tables & chairs available for hire.

Enquiries: Tracy 780710  
Or [tracylean@gmail.com](mailto:tracylean@gmail.com)

**Do you  
HATE  
washing  
these?  
then  
HIRE**



**White China & Cutlery  
and return it unwashed!**

**Enjoy your festivities  
with**

*Gill Judd*  
Cakes of Distinction

**Tel: 01295 780243**  
Email: [info@gilljuddcakes.co.uk](mailto:info@gilljuddcakes.co.uk)  
Website: [www.gilljuddcakes.co.uk](http://www.gilljuddcakes.co.uk)

## Colour Analysis by Annie Broe

I will show you which colours are best for you.

Wearing the right colours is an easy and effective way to enhance your appearance.


You will instantly look more radiant, younger and healthier

You will feel more confident

Colours are very powerful – use this power to your advantage and look fantastic!

Gift Vouchers available – **the perfect present**

For a personal colour analysis or for more details please call me on 01295 780637 or 07930 398151 or email [annie4colourandstyle@gmail.com](mailto:annie4colourandstyle@gmail.com)



**Personal Training Services  
with Jackie Mitchell**

- Increase fitness levels
- Lose weight sensibly; improve muscle tone
- Reshape and tone your body
- Reduce Stress levels; increase confidence

With your commitment and my expertise  
we can achieve those goals!

Tel: Jackie Mitchell on 07915 080182

## C.A. Berger

Painting & decorating

Carpentry repairs

Property maintenance

All interiors & exteriors

Residential & commercial

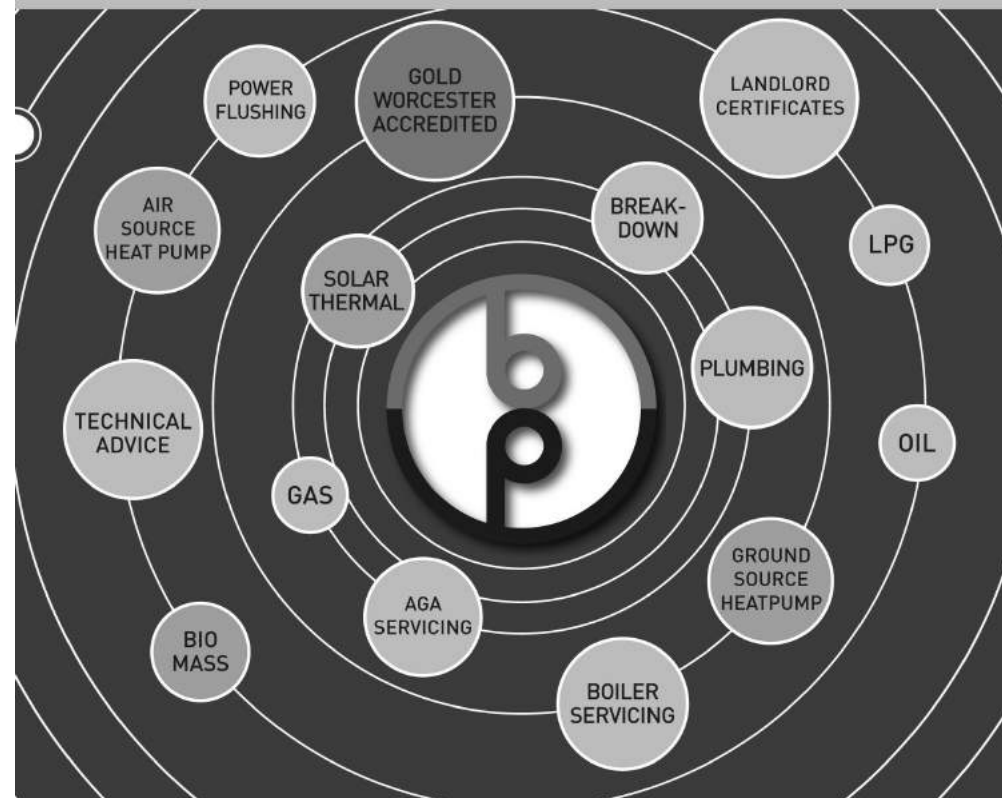
Mobile: 07875 212 315

Office Tel: 01295 738 633

Email:

claytonaberger@gmail.com

## A universal approach to plumbing and heating



T: 01295 738955

E: info@blueprintph.co.uk

Look us up @ [www.blueprintph.co.uk](http://www.blueprintph.co.uk)  

 **blueprint**  
PLUMBING & HEATING LTD

 **WORCESTER**  
Bosch Group

APPROVED  
INSTALLER  
 MCS

 OFTEC  
Registered  
Business  
2016068

 safe  
2016068

 Which?  
Trusted trader



## JUNIOR GOLF



**We want your child to try this great game**

**SATURDAY COACHING**  
WITH FULLY QUALIFIED  
GOLF PROFESSIONALS

PGA Pro  
the  of golf

2 sessions: 10am-11am and 11am-12 noon

**FUN & FRIENDLY** - All equipment provided

**CONTACT: 01608 730047 - John or Will**

**EASTER CAMP**  
10th - 12th April

**HALF TERM CAMP**  
30th April - 1st May

**SUMMER CAMPS** } 31st July - 2nd Aug  
and 14th - 16th Aug

## St. Nicholas Tadmarton

### Church Services



#### April 2017

<b>Sunday 2<sup>nd</sup></b>	11.00am Holy Communion (EH)
<b>Sunday 9<sup>th</sup></b>	**9.45am** Palm Sunday Procession of Palms & Benefice Eucharist (RH) EPWELL
<b>Sunday 16<sup>th</sup></b>	11.00am Easter Day Holy Communion (RH)
<b>Sunday 23<sup>rd</sup></b>	11.00am Village Service (EH)
<b>Sunday 30<sup>th</sup></b>	11.00am Holy Communion (JT)

#### MAY 2017

<b>Sunday 7<sup>th</sup></b>	**11.00am** Swalcliffe Benefice Eucharist (RH)
<b>Sunday 14<sup>th</sup></b>	11.00am Holy Communion (RH)
<b>Sunday 21<sup>st</sup></b>	11.00am PET SERVICE (EH)

**\*\* Every Tuesday 10.00am** Holy Communion (BCP) (RH)  
**April 4<sup>th</sup>, 11th, 18th, and 25<sup>th</sup> May 2<sup>nd</sup>, 9<sup>th</sup>, 23<sup>rd</sup>, and 30<sup>th</sup>**

Followed by; 10.30am Tea/Coffee in "The Lampet Arms"

Revd Ronald Hawkes (RH) Tel: 01295 780555  
 Email: revronald@wykehambenefice.org.uk  
 The Reverend John Tattersall (JT); The Reverend Elizabeth Hawkes (EH)  
 Revd Canon Glynn Evans (GE); The Reverend Hazel Scarr (HS)

### Council Report March 2017

The Council will met on the 2<sup>nd</sup> March and confirmed dates for all the 2017 events to be held in this parish. The APCM will be held in the church after the service on Sunday April 2<sup>nd</sup>. There will be a PET SERVICE on Sunday May 21<sup>st</sup>, all pets and owners will be welcome.

### Farewell from the Old Editor

After many years of editing *The Link* this is my last issue. It has been a pleasure but now I need to take a break and I am very grateful to Mery for taking on the editorship.

Before I go I should like to thank all the people who have helped me. Daisy Sadler, the previous editor, has always supported me and Julie Lingwood our tireless treasurer and advertisement manager has always been there to assist and given a helping hand where necessary. And thank you to our wonderful volunteers who deliver your *Link* in all weathers. They are: Helen and David Butler, Christine and Peter Jackson, Julie and Bob Lingwood, Pat Pierce, Alison and Paul Saunders, Charlotte and Matt Watkins, Susan and John Wilson, and Lynne and Gavin Vokes. Also thank you to Carole Moir for sending information on Swalcliffe people.

And finally to my wonderful wife Bernadette who has put up with me hunched up over the computer over all the years. Thank you all,

**Martin Key**



## Bone-Dry™

up to 20% Volume Discount with this advert!

### Dry Organic Carpet Cleaning

Carpets can be used **immediately** after cleaning!

**Our POWERFUL system-**

- ◆ Cleans deep down
- ◆ Safe for babies, children & pets
- ◆ Is completely dry
- ◆ Totally organic - reduces allergens
- ◆ Safe for allergy sufferers
- ◆ No shrinkage or seam splitting

**We also clean -**

- Upholstery
- Natural Carpets - (Sisal, Seagrass)
- Oriental Rugs
- Leather furniture

**Local Office 01295 780909**

e: [banbury@bone-dry.co.uk](mailto:banbury@bone-dry.co.uk)  
w: [www.bone-dry.co.uk](http://www.bone-dry.co.uk)





**NOAHSARK**  
Painting Company

SIMPLY BEAUTIFUL DECORATION

Bespoke murals

Exterior decoration

Every form of interior & exterior painting & decorating

(01295) 811026  
www.noahsarkpainting.co.uk

## Pilates in Sibford

Madeleine Wilson M.Sc.,

### Master Mat & Studio Teacher Offers:

- **Bespoke one to one and duet studio sessions**, training on specialised **Pilates equipment**:- reformers, chairs, barrels and cadillac.
- **Small group matwork classes** incorporating small equipment

For all levels from **beginners to advanced**

T: 01295 780279  
Mobile: 07905 953300  
E: mw1@linuxwaves.com  
www.pilatesinsibford.co.uk

There will be an Evensong service at 6pm on Sunday June 6<sup>th</sup>. The Village Scarecrow Festival will start on Saturday July 8<sup>th</sup>. All entries are welcome and small prizes are awarded for winning entries.

The Lent Lunch was held in The Village Hall on Tuesday 14<sup>th</sup> March. Soups and Homemade bread, followed by cheese and biscuits and cake were very much enjoyed by all who attended. Many thanks to Shirley, Jennifer and "The TEAM". Total sum raised was £205 for Cancer Research.

Members of this church joined other church members from our Benefice on their trip to London on the 27<sup>th</sup> of February, we enjoyed a great tour of The Houses of Parliament and an enjoyable evensong in Westminster Abbey, we had the best seats in the house thanks to our Rector Ronald, and a great day out together.

Note for your diaries: scarecrow concert Saturday July 22<sup>nd</sup>. Pudding Club Saturday October 21<sup>st</sup>.

We hope to see you soon at any of our services or events and you will be made most welcome.

**John Wilson**

**Bloxham Computers Ltd**  
Friendly, local help with computers

*"Always been fast and reliable"*

In association with  
**Mark Clayson Computers Ltd**

**Free help choosing a new computer**

Remove **Viruses**  
Setup your **Internet** and **Printers**  
Web design  
Setup and fix **email** problems

**Mac Support**  
**Speed up** your computer  
**Laptop** repair  
**Broadband** setup and help

**Free advice: Tim - 0800 6129258 / 01295 812953**  
**help@bloxhamcomputers.com**

**Dedicated to delivering an outstanding service...**

Gardening Tree Work Landscaping Maintenance

**4<sup>th</sup> Corner Landscaping**

For a no-obligation quote, contact us;  
info@4thcorner.co.uk 01295 817628  
**www.4thcorner.co.uk**

## Tadmarton Village Hall Newsletter

### AGM Meeting – 13<sup>th</sup> April 7pm at the Village Hall

*Open to all Villagers, we would love to hear from anyone who would like to join the committee or help with events. Remember, it's your Village Hall*

### **Tadmarton Village Hall 250 Club**

Purchase an annual ticket for £6 and have the chance of winning the monthly draw of a cash prize. 50% of the ticket price goes into the prize fund and 50% goes into the Village Hall fund. Please contact Susan Mahoney on 788980 if you would like to buy a ticket or purchase one from the Lampet Arms. \*\*Tickets now reduced as the first two draw's have taken place\*\*

### Dates for your Diary:-

**\*\*\*Spring Walk\*\*\*\*\*Spring Walk\*\*\*\*\*Spring Walk\*\*\*\*\***

Join us on **1<sup>st</sup> April** for a morning walk finished off with a walker's breakfast at the village hall. The plan is to start at the Village hall at **0930 on Saturday morning** and follow an historic route around the village (map provided on arrival). Warm drinks and Simple breakfast of bacon baps (or veggie equivalent) at the end. All welcome, children and dogs too. The hope is that this will bring together likeminded people who may then want to take the walking groups forward.

**Coffee Morning – Saturday 29<sup>th</sup> April 10am-11.30am**

*Join us for coffee and a chat; get to know your fellow Villagers in a friendly environment. Want to help at the coffee morning? Get in touch, all welcome.*

If you would like to get involved, we would love to hear from you.

Please contact:

Susan Mahoney 01295 788980

Di Yardley 01295 780481

Alex Silverman (alex@alexsilverman.co.uk)

## rachel berger INTERIORS

We provide a comprehensive interior decoration service that includes:

- Upholstery
- Curtains, blinds and soft furnishings
- Hand painted furniture
- Lampshades and lighting
- Artwork
- Gilding and mirrors.
- Decorative wall finishes
- Hand painted natural wood beams
- Colour and decorating consultancy
- De-cluttering and Home-staging service
- Beautiful faux silk flowers
- Stockist of Osborne and Little, Linwood, Designers Guild and many more...

Our service is completely bespoke and we are happy to work with you and your budget to help you get the best out of your home.

Contact email: [rachel.berger@btinternet.com](mailto:rachel.berger@btinternet.com)

Telephone: Rachel on: 07913 546867

Check us out at [www.rachelberger.co.uk](http://www.rachelberger.co.uk)  
and follow us on facebook and twitter.



Rachel Berger Interiors - High street, Deddington, OX15 0SJ

## Super fast broadband is arriving in Swalcliffe!

As *The Link* goes to press Swalcliffe Parish Church is finalising its discussions with Sugarnet, a local internet provider, to install four small relay panels on the church tower which will mean we can have radio based hi-speed internet in our local community.

Most people in the village will be able to subscribe to the Sugarnet service if they wish, at a price comparable to the existing supplier (whose vans we see nearly every day in the village putting sticking plaster on the existing infrastructure!). Sugarnet will be able to guarantee a very reliable hi-speed Internet connection and one that bypasses the vagaries of the local cabling in the village.

A number of people have already expressed an interest in signing up to the new service and if you want to learn more about it we have arranged a **public meeting at 7.30pm in Swalcliffe Village Hall on Tuesday 4th April** when you will be able to hear from Oliver Helm, the MD of Sugarnet about their service and plans; meet some of their local team; and ask any questions that you have.

Alternatively you can contact Sugarnet directly (<https://www.sugarnet.co.uk>) or register your interest on the Swalcliffe village Website. ([www.swalcliffevillage.co.uk](http://www.swalcliffevillage.co.uk))

The generous community minded attitude of the Church has made this positive development possible and also not forgetting all our efforts a few years ago to raise the necessary funds to make sure the Tower is still standing!

From the Swalcliffe Digital Connectivity Group – David McLindon;  
Colin Hill and Peter Beddowes

### World Dance group in Swalcliffe

Second Wednesday each month  
Swalcliffe Village Hall 7.30-9pm

Learn folk dances from around the world to beautiful music in friendly company. No partner needed or experience necessary, as each dance is patiently taught before the music starts.

There is no need to book, just turn up with £5 in your pocket and have some fun. Contact Tracy 780710 or [tracylean@gmail.com](mailto:tracylean@gmail.com).

### Linda Morse



Garment and Curtain Alterations  
Curtains and Blinds made to measure

Collection and delivery by arrangement

Telephone 01295 720930  
Email: [lindamorse@hotmail.co.uk](mailto:lindamorse@hotmail.co.uk)

### PR HANDYMAN SERVICES

For all those odd-jobs needed around the home.

Erecting shelves, curtain rails to building flat pack furniture. All aspects of DIY undertaken. No job too small. A friendly & reliable service at reasonable prices.

Please call Paul on 01295 722490, or 07796300238  
Email: [paullester3655@yahoo.co.uk](mailto:paullester3655@yahoo.co.uk)

Also undertaken  
Loft, Garage & Shed Clearances

## NEIL MEGSON Electrical Services

Tel: .01295 263665  
Mobile 07887 653842

Email  
[meggers1@btinternet.com](mailto:meggers1@btinternet.com)

Light-Sockets-Extensions  
Re-Wires-New Builds.  
For All of Your  
Domestic Electrical  
Requirements.

FREE ESTIMATES –  
24 HOUR CALL OUT

## Oxon Computers

Get IT sorted

Your local fully qualified  
computer specialist based  
in Sibford Gower for 10 years

- \* Repairs and upgrades
- \* Speed up your PC
- \* Internet and networks
- \* Viruses removed

For free advice phone Dan on

**01295 788766**

email: [admin@oxoncomputers.co.uk](mailto:admin@oxoncomputers.co.uk)

[www.oxoncomputers.co.uk](http://www.oxoncomputers.co.uk)

"Cured my computer problem quickly and in a friendly manner" Tadmarton resident



### **Wyatt Almshouses – Broughton – One bedroom accommodation available**

*The Wyatt Almshouses are situated on the Main Road and Wykham Lane junction in the centre of Broughton, almost opposite the Saye & Sele Arms.*

*The Hornton stone properties were built in 1859 by Miss Elizabeth Wyatt and have been maintained to a high standard since that time providing modern, comfortable, desirable accommodation. They are owned by The Wyatt Almshouse Charity, registered with The Charity Commission, and managed by appointed Trustees responsible for all maintenance, decoration and refurbishment of the properties.*

**A ground floor single unit, currently undergoing extensive refurbishment, will shortly become available and the Trustees invite applications for occupancy, in writing please, addressed to Margaret Allan, Laverock, Main Street, North Newington, Banbury OX15 6AE, closing date 21st April 2017.**

### **Swalcliffe Park Equestrian- Calendar of Events- 2017**

Sunday 9th April Warwickshire Hunt Pony Club Hunter Trials  
 Sun 30th April & Mon 1st May Horse-Events One Day Event  
 Fri 4th-Sun 6th Aug BRC Nat. Horse Trials Championships  
 Sat 30th September & Sun 1st Oct Horse Events One Day Event  
 Sunday 31st October CROWN Riding Club Hunter Trial (TBC)

## **Parish Council Meetings 2017**

### **Tadmarton**

All take place at 7.00 pm in the annexe at the rear of the Village Hall except the Annual Parish Meeting which takes place in the Main Meeting Room of the Village Hall.

**Members of the public are very welcome to attend all meetings.**

**3<sup>rd</sup> April (Parish Council meeting at 7pm followed by Annual Parish Meeting in main hall at 8pm)**

15<sup>th</sup> May; 26<sup>th</sup> June; 4<sup>th</sup> September

9<sup>th</sup> October; 27<sup>th</sup> November

### **Swalcliffe**

All meetings are held in the Village Hall and start at 7.30pm.

**Members of the public are welcome to attend**

**11<sup>th</sup> April (Annual Parish Meeting)**

23<sup>rd</sup> May (Annual Parish Council meeting);

4<sup>th</sup> July; 19<sup>th</sup> September;

31<sup>st</sup> October; 5<sup>th</sup> December

**Watch the Notice Boards or Websites for minutes or changes to above**